

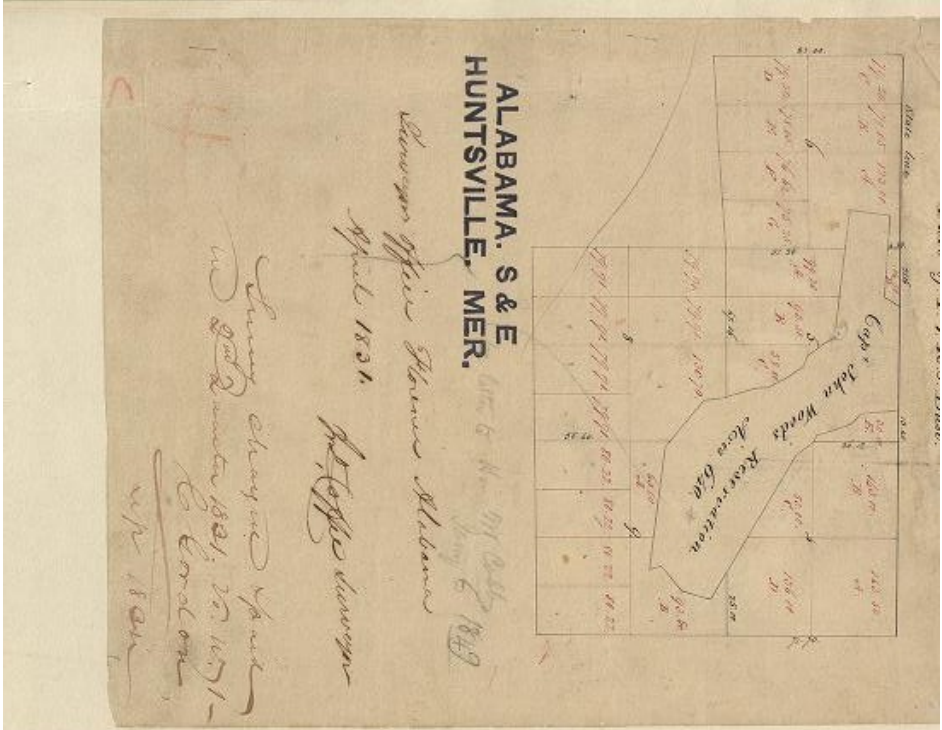
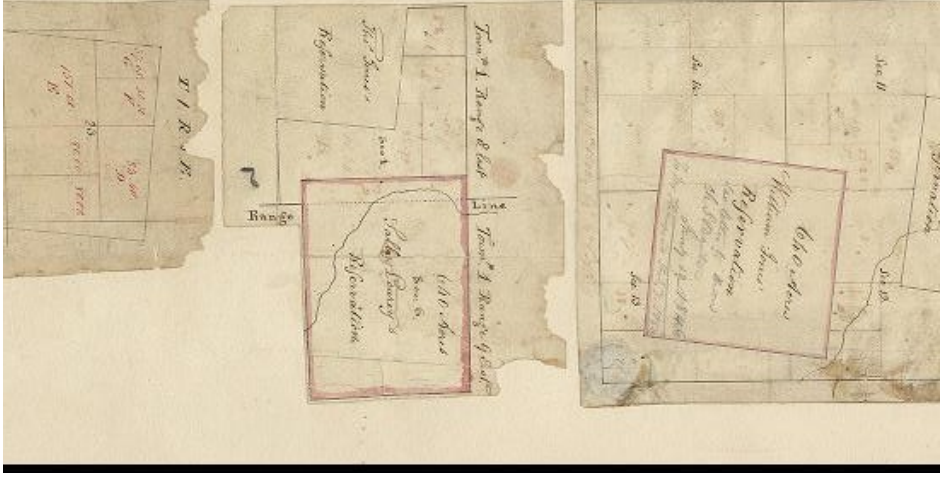
**GENERAL LAND OFFICE**  
**PRIMER**  
**OF**  
**INSTRUCTIVE INFORMATION**  
**RELATIVE TO**  
**LEGAL SUBDIVISIONS AND PLATS**  
**OF**  
**PUBLIC LAND SURVEYS**

Prepared under direction of  
I.P. Berthrong  
Chief of Drafting Div.

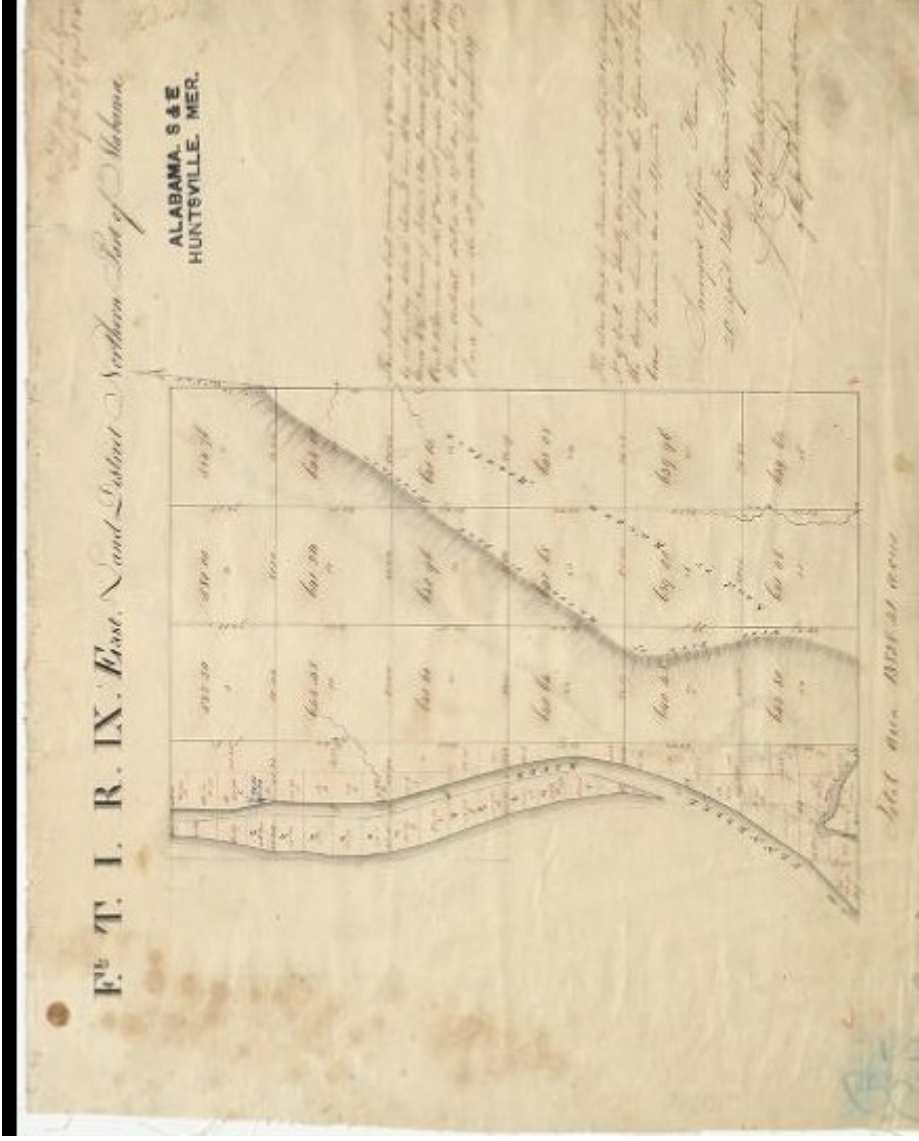
T.O.W.

*Publication Printed circa 1921*

Reproduced by the U.S. Department of the Interior, Bureau of Land Management,  
Eastern States



12



FOR CAREFUL CONSIDERATION AND OBSERVANCE.

The following must be observed in examining the records in the Drafting Division.

First, examine the card index for township plats and diagrams, so that you may be sure that the plat necessary for your case is in the files; it is possible that the plat desired has been withdrawn.

In withdrawing a plat or plat book, leave a receipt card for same, giving the township and range number or the number of volume, the number of your room, the date withdrawn, and sign your name.

Plats must not be retained for a longer period than is absolutely necessary for their use.

In returning plats to the files, it is absolutely necessary that the same be returned to their proper place—loose plats are filed in order, first by range number and then by township number.

Use the greatest care in handling of records—do not fold the plats; in many cases it would be impossible to restore or replace a plat if damaged, destroyed, or lost.

Do not make any notations on face of plat.

*William Spry*  
Commissioner.

I.V.S.

8

(WILLIAM SPRY COMMISSIONED 03/22/190

METHOD OF NUMBERING  
TOWNSHIPS.

North and South from Base Line and East and West from Meridian.

			T.3 N.		
			T.2 N.		
			T.1 N.		
R.3 W.	R.2 W.	R.1 W.	R.1 E.	R.2 E.	R.3 E.
			T.1 S.		
			T.2 S.		
			T.3 S.		

Labels in diagram:  
 - Township Line: T.3 N., T.2 N., T.1 N., T.1 S., T.2 S., T.3 S.  
 - Range Line: R.3 W., R.2 W., R.1 W., R.1 E., R.2 E., R.3 E.  
 - Base Line: BASE LINE  
 - Meridian: MERIDIAN  
 - Township Line (bottom): TOWNSHIP LINE  
 - Range Line (left): RANGE LINE  
 - Range Line (right): RANGE LINE

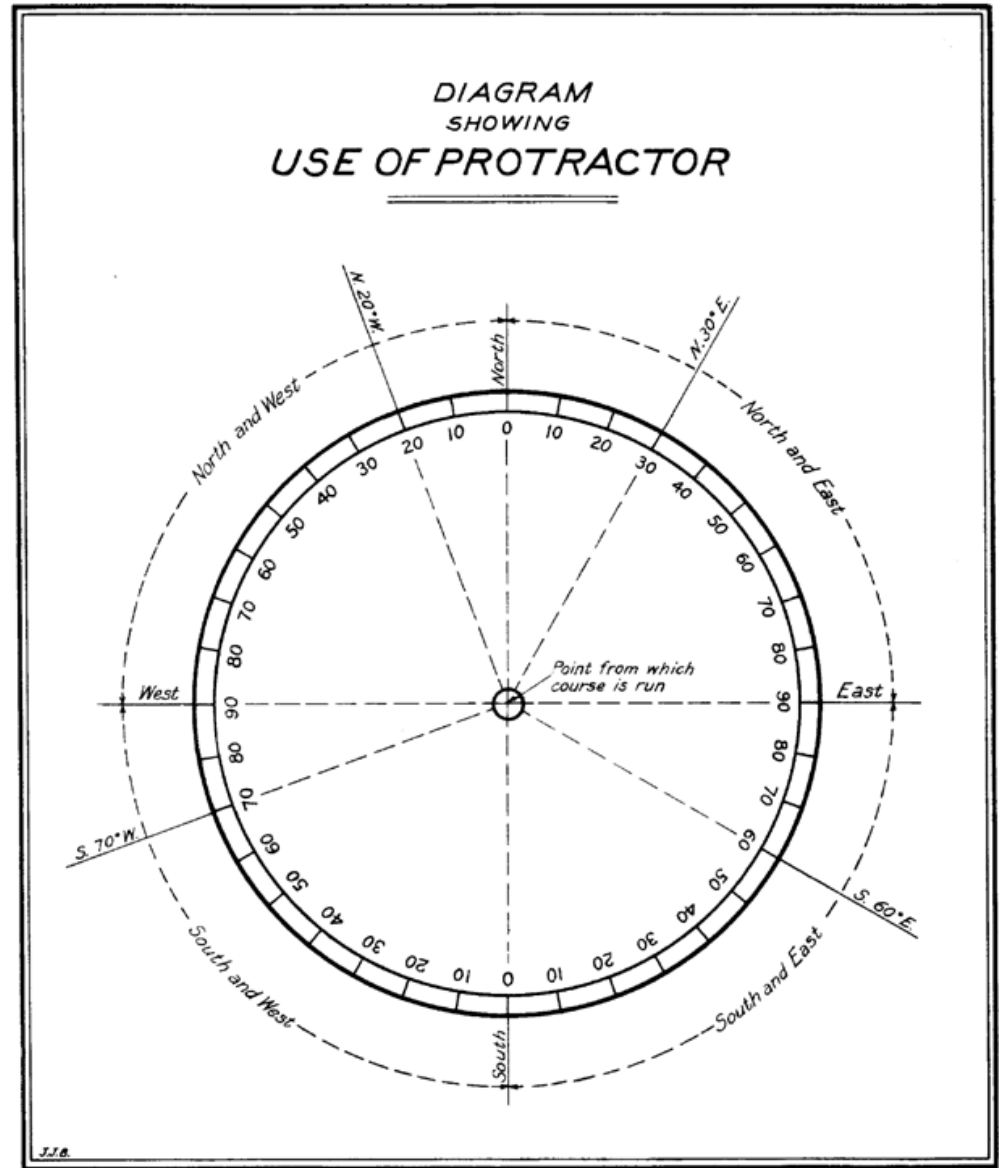
I.V.S.

THEORETICAL  
TOWNSHIP DIAGRAM  
SHOWING  
METHOD OF NUMBERING SECTIONS  
WITH ADJOINING SECTIONS

36	31	32	33	34	35	36	31
80 Ch.		6 Miles — 480 Chains				80 Ch.	
1 Mile							
1	6	5	4	3	2	1	6
12	7	8	9	10	11	12	7
480 Chains							
13	18	17	16	15	14	13	18
6 Miles							
24	19	20	21	22	23	24	19
25	30	29	28	27	26	25	30
36	31	32	33	34	35	36	31
1	6	5	4	3	2	1	6

J.V.S.

DIAGRAM  
SHOWING  
USE OF PROTRACTOR



J.J.B.

## UNITS OF MEASURE

### UNITS OF LINEAR MEASURE

1 Mile equals 5280 feet  
 1 " " 80 chains  
 1 Chain " 100 links  
 1 " " 66 feet  
 1 Link " 7.92 inches  
 1 Rod, Pole or  
 Perch equals  $16\frac{1}{2}$  feet

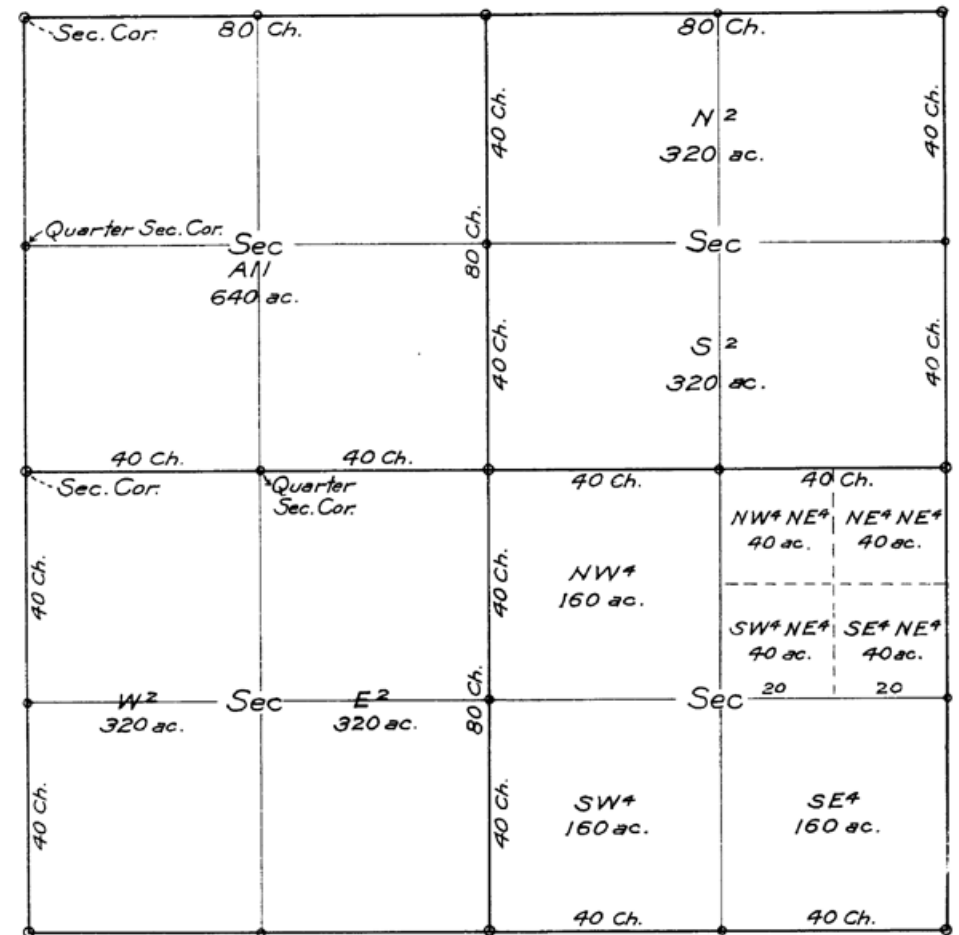
### UNITS OF AREA

1 Acre equals 10 sq. chains  
 1 " " 43560 " feet  
 1 Sq. Mile equals 640 acres

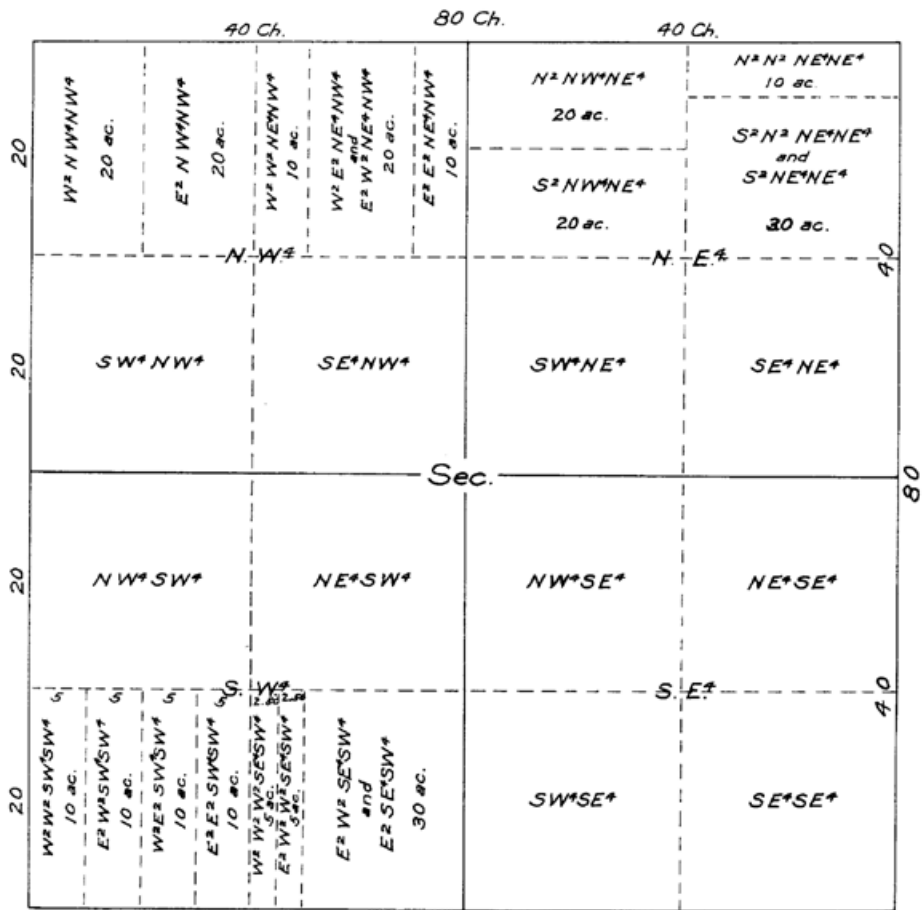
A theoretical Township is six miles square, containing thirty six sections, one mile square, of 640 acres each.

Area of a theoretical township 3600 acres.

## LEGAL SUBDIVISIONS OF SECTION

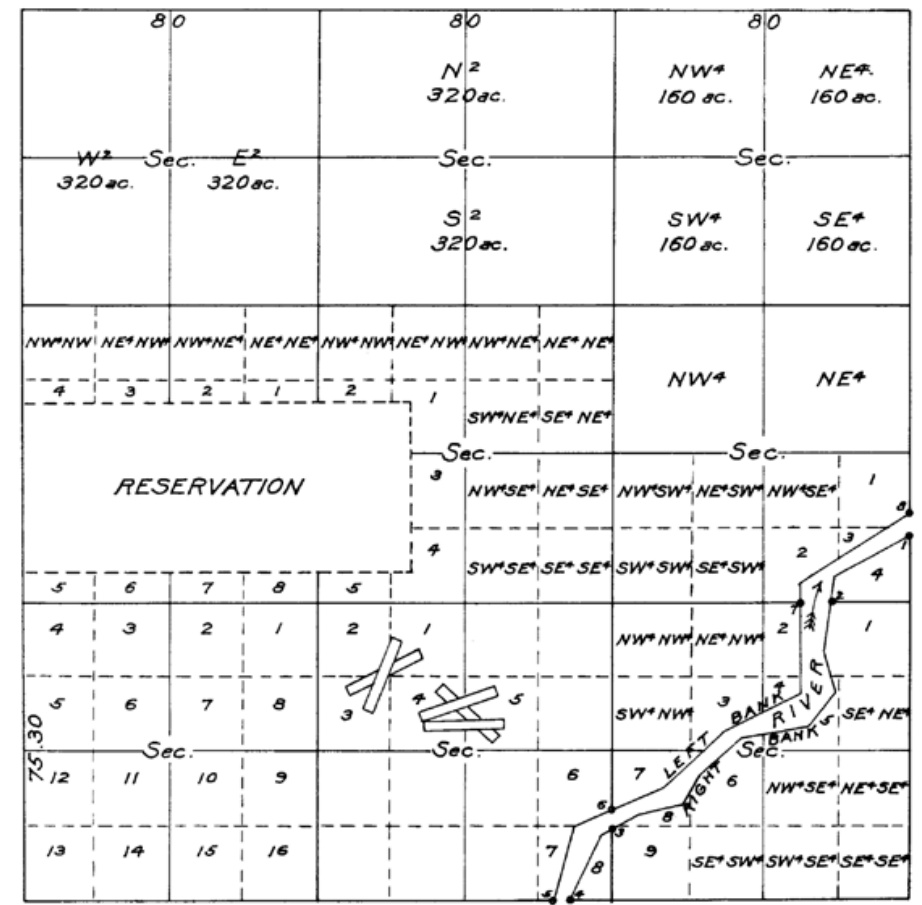


SECTION DIAGRAM  
SHOWING  
SMALL SUBDIVISIONS



L.V.S.

PART OF TOWNSHIP  
SHOWING  
LEGAL SUBDIVISIONS AND LOTTINGS



L.V.S.